

Two Exotic Tree Diseases with Different Biological Consequences: Alder rust

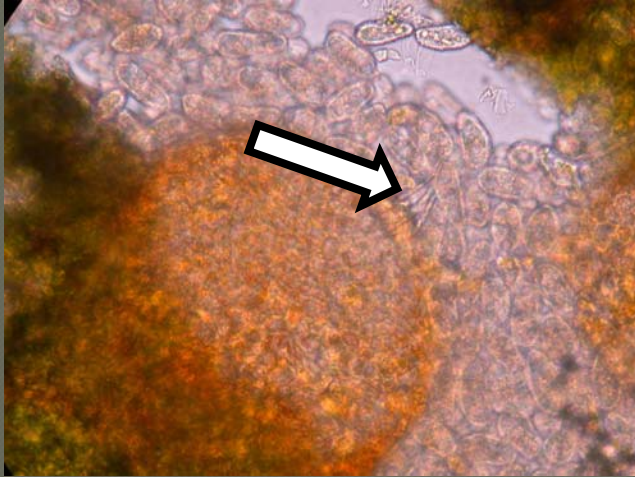


David Fenwick

Cheryl Blomquist



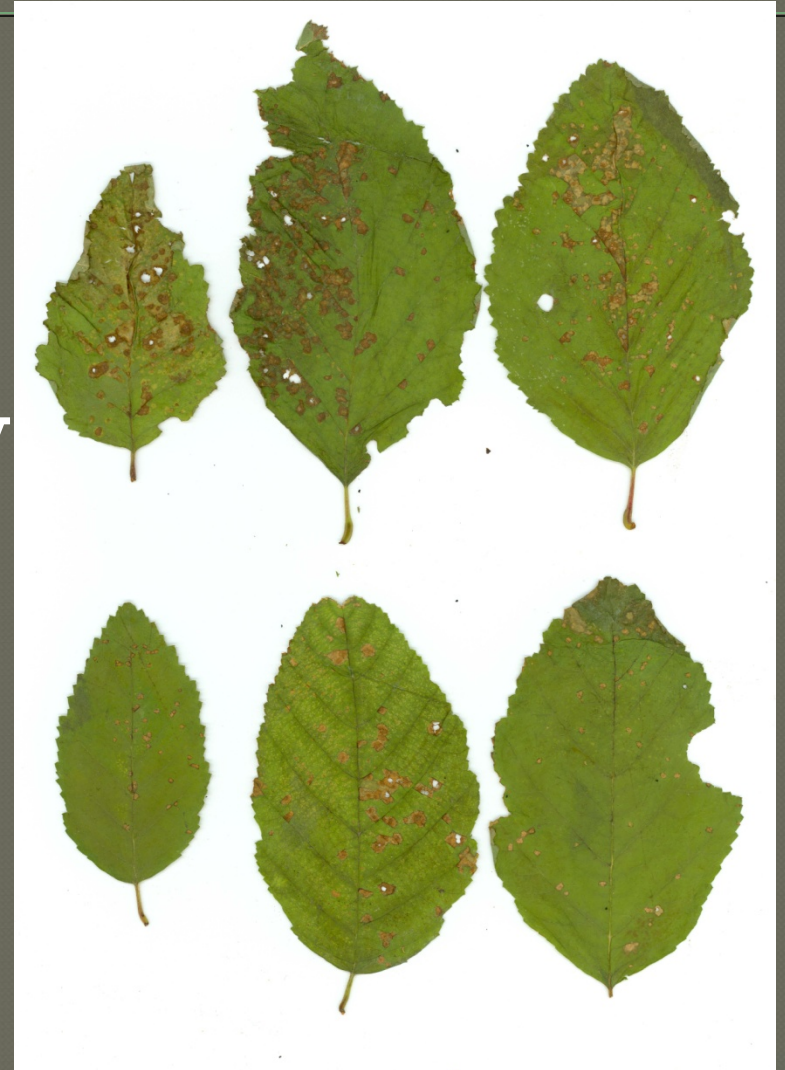
Melampsoridium sp. Rust from Santa Cruz County



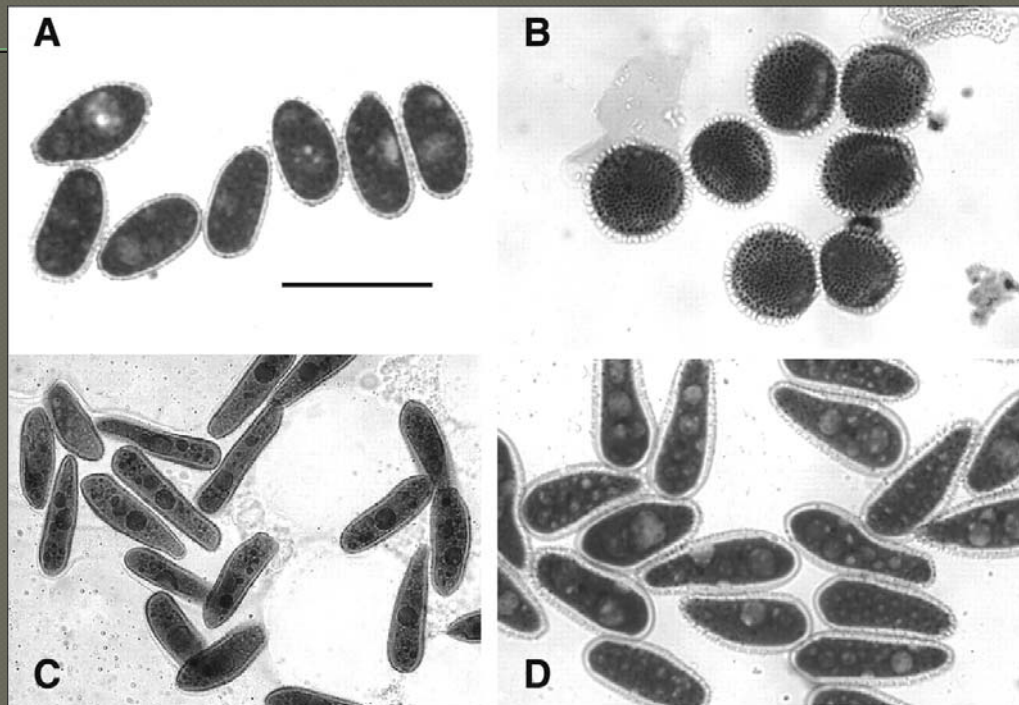
Alnus rhombifolia

White Alder Rust

- Santa Cruz County
- Placer County
- Sacramento County
- Santa Barbara County



Alder Rust Species



- A. *Melampsorium hiratsukanum* urediniospores (alder)
- B. *M. hiratsukanum* aeciospores (*Larix* sp.)
- C. *M. alni* urediniospores (alder)
- D. *M. betulinum* urediniospores (birch and alder)

Hantula, J., Hendry, S., Yamaguchi, T.
2009. *Mycologia* 101:622-631

Alder rust

- ◉ *Melampsorium hiratsukanum*
- ◉ Native to east Asia
- ◉ Alternate host is *Larix* sp.
- ◉ Epidemics in Finland and Estonia in mid 1990's
- ◉ Detected in Canada, Central, South America
- ◉ Earlier misidentified herbarium sample from 1935
- ◉ Not been identified in native stands in CA

Thank you!