

UCR

Phytophthora siskiyouensis on
Alders in southern California:
An Update

Deborah M. Mathews, Ph.D.

and

Michael D. Coffey, Ph.D.

Department of Plant Pathology and Microbiology
dmathews@ucr.edu

UNIVERSITY OF CALIFORNIA, RIVERSIDE

Dieback in canopy
of white alders,
Alnus rhombifolia,
in Irvine, CA.



Dead branch on *A. rhombifolia*



Introduction

- After observing several trees, moist dark areas found on trunks

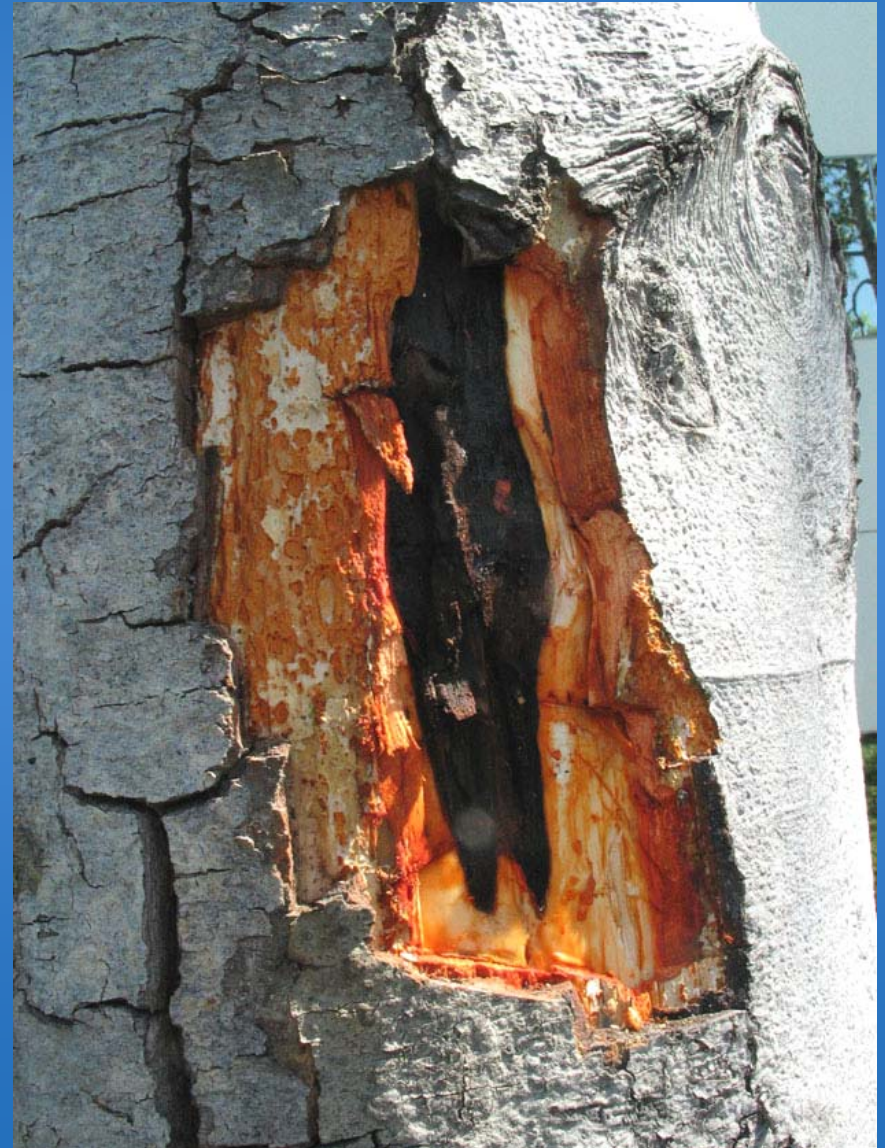
Multiple dime to quarter sized moist spots on trunks



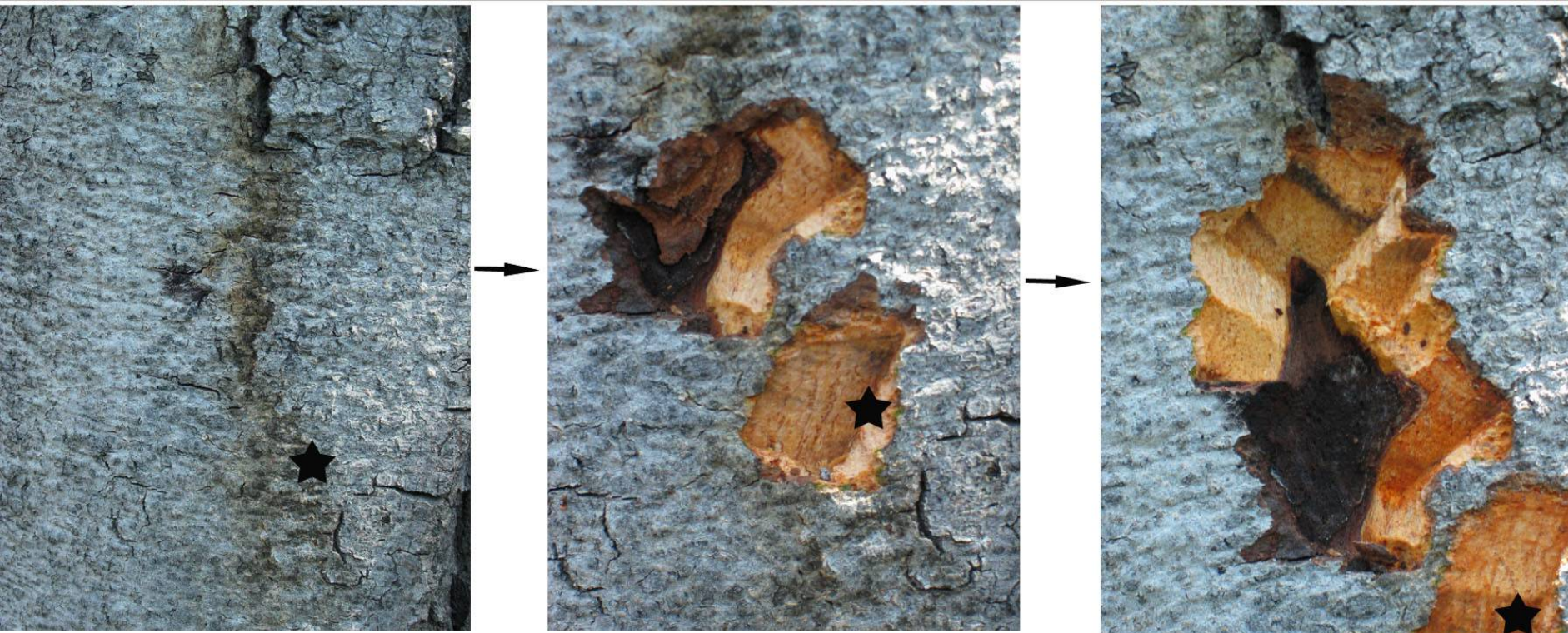
Introduction

- Removal of bark surrounding spots exposed cankers of varying size and depth in wood

Type 1-most common



Type 2-water mark



Canker on root of dead tree



Diagnosis?

- Went to collect fresh samples in several locations in southern CA in 2008

Diagnosis?

- Went to collect fresh samples in several locations in southern CA in 2008
- No positive cultures until August 2008 from Costa Mesa

Diagnosis?

- Went to collect fresh samples in several locations in southern CA in 2008
- No positive cultures until August 2008 from Costa Mesa
- DNA extracted, PCR of ITS region and sequencing

Diagnosis?

- Went to collect fresh samples in several locations in southern CA in 2008
- No positive cultures until August 2008 from Costa Mesa
- DNA extracted, PCR of ITS region and sequencing
- Compared to known sequences

Diagnosis?

- Went to collect fresh samples in several locations in southern CA in 2008
- No positive cultures until August 2008 from Costa Mesa
- DNA extracted, PCR of ITS region and sequencing
- Compared to known sequences
- 100% match to *Phytophthora siskiyouensis*

The Pathogen

- *P. siskiyouensis* previously found in southern Oregon forests since 2003, and in Melbourne, Aus. on *A. glutinosa*

The Pathogen

- *P. siskiyouensis* previously found in southern Oregon forests since 2003, and in Melbourne, Aus. on *A. glutinosa*
- First found in CA in 2007 in Foster City on Italian alder, *A. cordata*, by CDFA team

The Pathogen

- *P. siskiyouensis* previously found in southern Oregon forests since 2003, and in Melbourne, Aus. on *A. glutinosa*
- First found in CA in 2007 in Foster City on Italian alder, *A. cordata*, by CDFA team
- Isolated only from cambial tissues in canker, not from bark or soil

The Pathogen

- *P. siskiyouensis* previously found in southern Oregon forests since 2003, and in Melbourne, Aus. on *A. glutinosa*
- First found in CA in 2007 in Foster City on Italian alder, *A. cordata*, by CDFA team
- Isolated only from cambial tissues in canker, not from bark or soil
- CDFA is involved since *P.sisk.* is a Quarantine pathogen

The Pathogen

- *P. siskiyouensis* previously found in southern Oregon forests since 2003, and in Melbourne, Aus. on *A. glutinosa*
- First found in CA in 2007 in Foster City on Italian alder, *A. cordata*, by CDFA team
- Isolated only from cambial tissues in canker, not from bark or soil
- CDFA is involved since *P.sisk.* is a Quarantine pathogen
- Testing cankers with ELISA and PCR directly

The Pathogen

- *P. siskiyouensis* previously found in southern Oregon forests since 2003, and in Melbourne, Aus. on *A. glutinosa*
- First found in CA in 2007 in Foster City on Italian alder, *A. cordata*, by CDFA team
- Isolated only from cambial tissues in canker, not from bark or soil
- CDFA is involved since *P.sisk.* is a Quarantine pathogen
- Testing cankers with ELISA and PCR directly
- One additional *P.sisk.* positive sample from Lake Forest, culture obtained from commercial diagnostic lab

What's Next?

- Continuing to identify declining alders in southern CA, over 30 sites tested in 2009, all seasons

Survey sites in southern California



Symptoms from alder in San Diego



Symptoms from alder in San Diego



Unresolved Issues

- Still only one successful culturing and ID of *P. sisk*.

Unresolved Issues

- Still only one successful culturing and ID of *P. sisk.*
- ELISA positives yielded no cultures

Unresolved Issues

- Still only one successful culturing and ID of *P. sisk*.
- ELISA positives yielded no cultures
- *Phytophthora* immunostrips not consistent from alders

Unresolved Issues

- Still only one successful culturing and ID of *P. sisk*.
- ELISA positives yielded no cultures
- *Phytophthora* immunostrips not consistent from alders
- **Waiting for PCR of immunostrips**

Unresolved Issues

- Still only one successful culturing and ID of *P. sisk*.
- ELISA positives yielded no cultures
- *Phytophthora* immunostrips not consistent from alders
- Waiting for PCR of immunostrips
- **Role of weather in pathogen activity**

Continuing Work

- Not ruling out other causes in some trees

Continuing Work

- Not ruling out other causes in some trees
- Need to assess threat to trees in natural habitats

Continuing Work

- Not ruling out other causes in some trees
- Need to assess threat to trees in natural habitats
- Found similar symptoms in local mountain alders, most had insect galleries inside, cause not determined

Continuing Work

- Not ruling out other causes in some trees
- Need to assess threat to trees in natural habitats
- Found similar symptoms in local mountain alders, most had insect galleries inside, cause not determined
- Alders in Europe dying from *P. alni*, also in Alaska 2007

Summary

- *P. siskiyouensis* confirmed in 3 CA locations

Summary

- *P. siskiyouensis* confirmed in 3 CA locations
- Possible multiple causes of dieback in alder

Summary

- *P. siskiyouensis* confirmed in 3 CA locations
- Possible multiple causes of dieback in alder
- Need robust diagnostic test(s) for identification that doesn't rely on culturing

Acknowledgements

- Don Hodel, UCCE Los Angeles Co.
- Kelly Parkins, Parkins Landscape Associates
- Cheryl Blomquist, CDFA
- Agdia, Inc
- Paul Zambino, USFS
- Multiple arborists and landscape professionals