

CDFA Plant Pest Diagnostics Center



A Word about DED.....

- On the rise in Sacramento !
 - Inadequate resources for timely removals
 - smaller “hidden” trees harboring pathogen
- >200 lab-confirmed positives 2002-2005
- 80 lab-confirmed positives this year alone
- Multiple elm species positive for DED
- PPDC diagnoses 100 to 200 samples per year for City of Sacramento
- Occasional County-collected samples for other areas such as Yolo County

A Word about SOD.....(or “*Ramorum* blight”)

- Still alive and well in California nurseries
- USDA-mandated and funded project
- 25,000 nursery samples processed per year for last 3 seasons (compliance, etc.)
- Similar numbers anticipated for 2007

A Word about Pitch Canker...

- Only occasional samples from County or State collectors
- Monterey Pine Nursery 1-0 seedlings from SLO once a year prior to shipment to California Christmas tree growers (ca. 100-200 seedling samples)

Redwood (*Fusicoccum*) canker





Diamond spot of Washingtonia Palm

Beetle injury to camphor





Abiotic plant problems

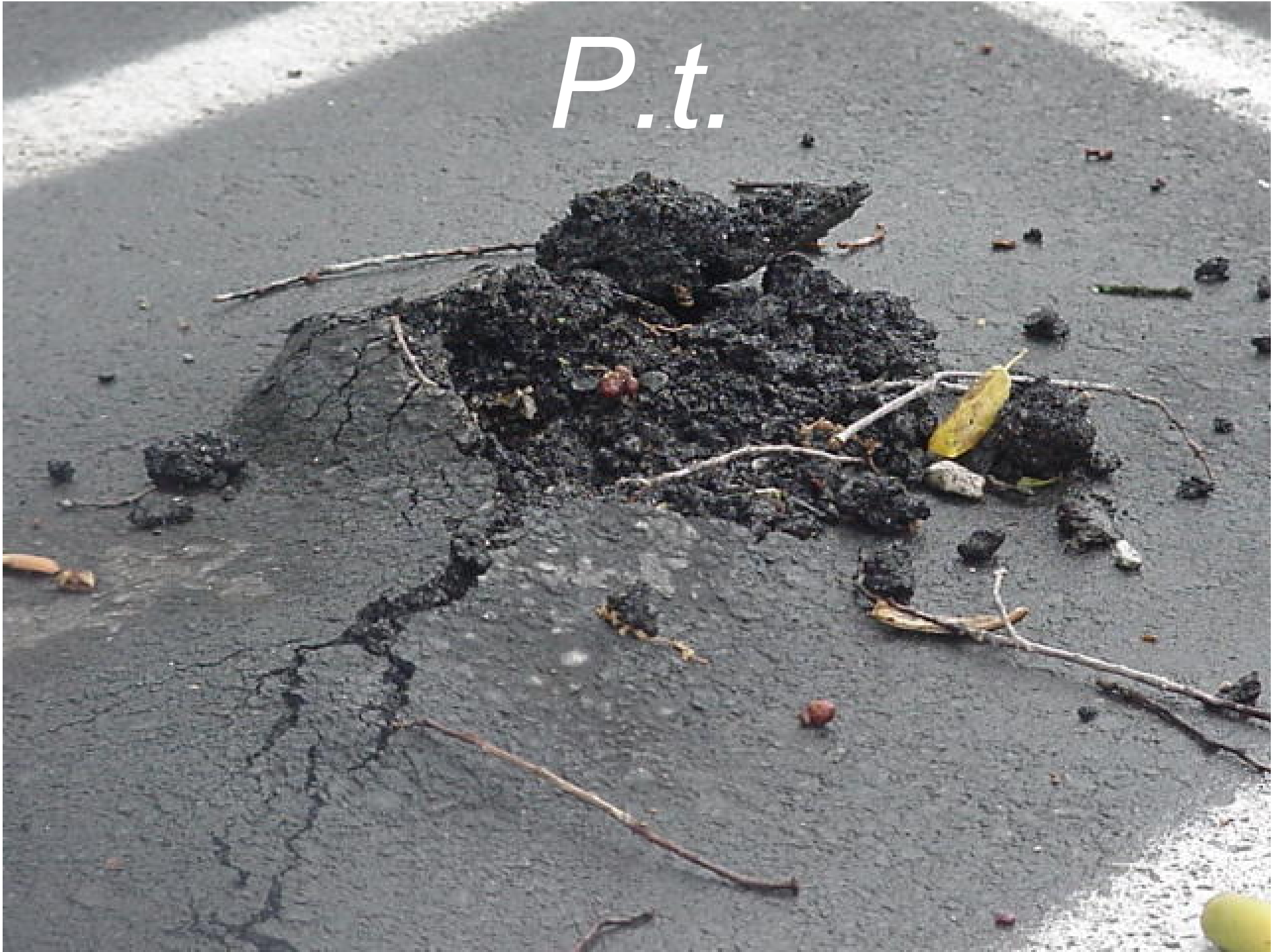
Cedar Apple Rust (interception)



Oddballs



P.t.



Cylindrosporium kelloggii

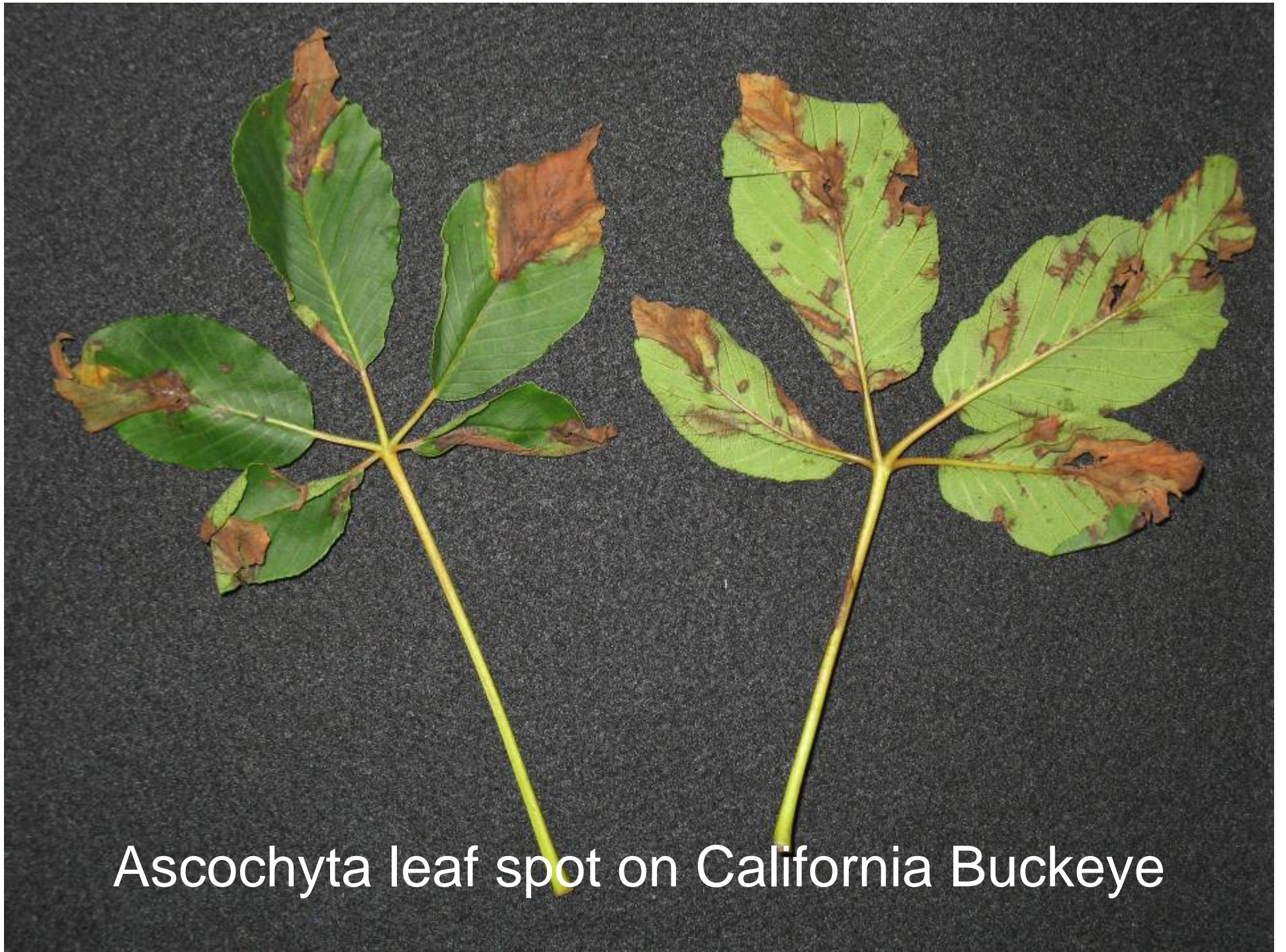


Phragmidium violaceum



Phragmidium violaceum





Ascochyta leaf spot on California Buckeye

Japanese Dodder on Privet





Japanese Dodder



Japanese Dodder on Oleander

Some Trees & Woody Plants Parasitized by Japanese Dodder in California Thus Far

- Willow
- Blackberry
- Elderberry
- Coast Live Oak
- California Buckeye
- Texas Privet
- Chinese Privet
- Almond
- Grape
- Plum
- Citrus
- Euonymous
- Apple
- Oleander

