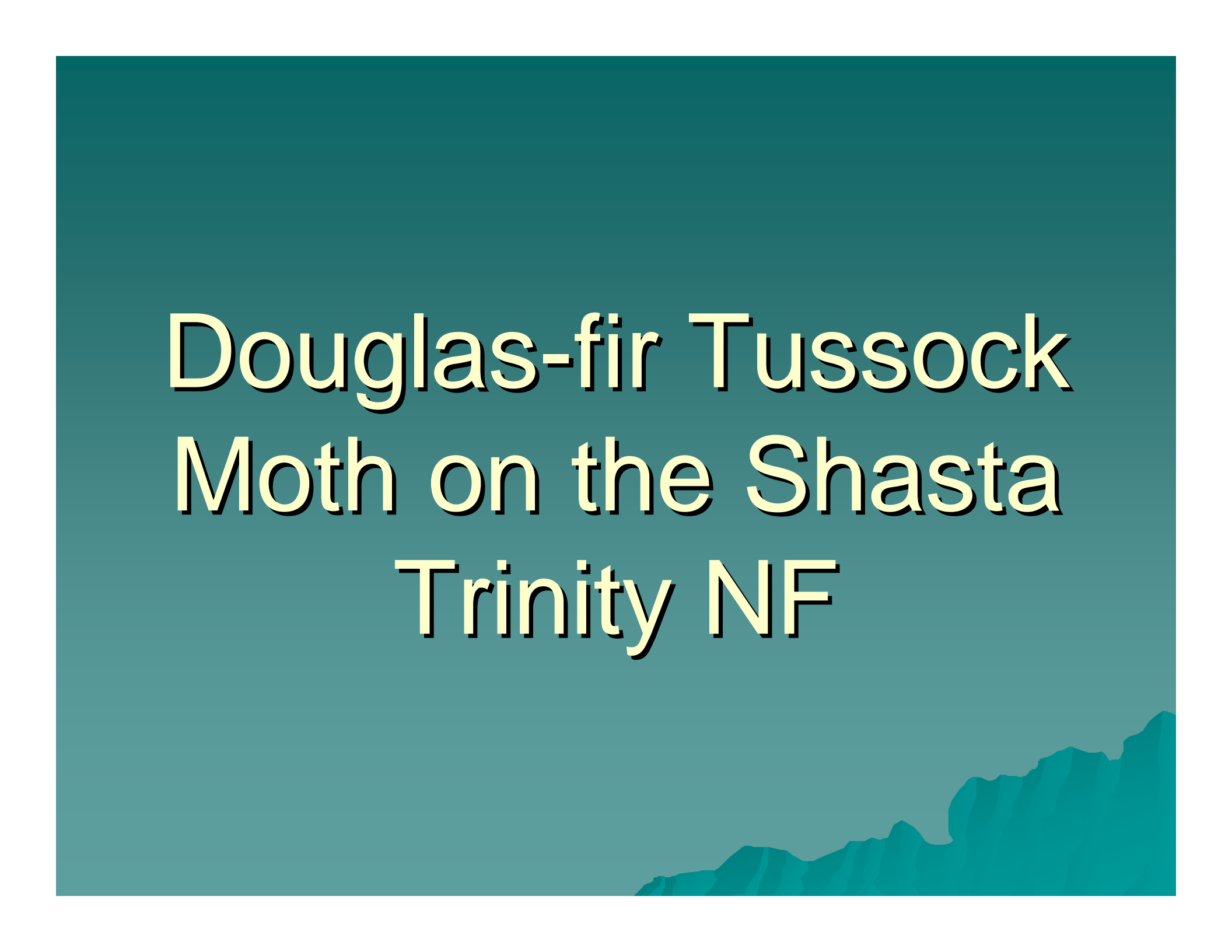


Douglas-fir Tussock
Moth on the Shasta
Trinity NF

The background is a solid teal color. At the bottom right corner, there is a silhouette of a mountain range in a slightly darker shade of teal.

Adults



Female laying eggs



UGA2252027

Larvae hatching



Larva



Bear Mountain - July



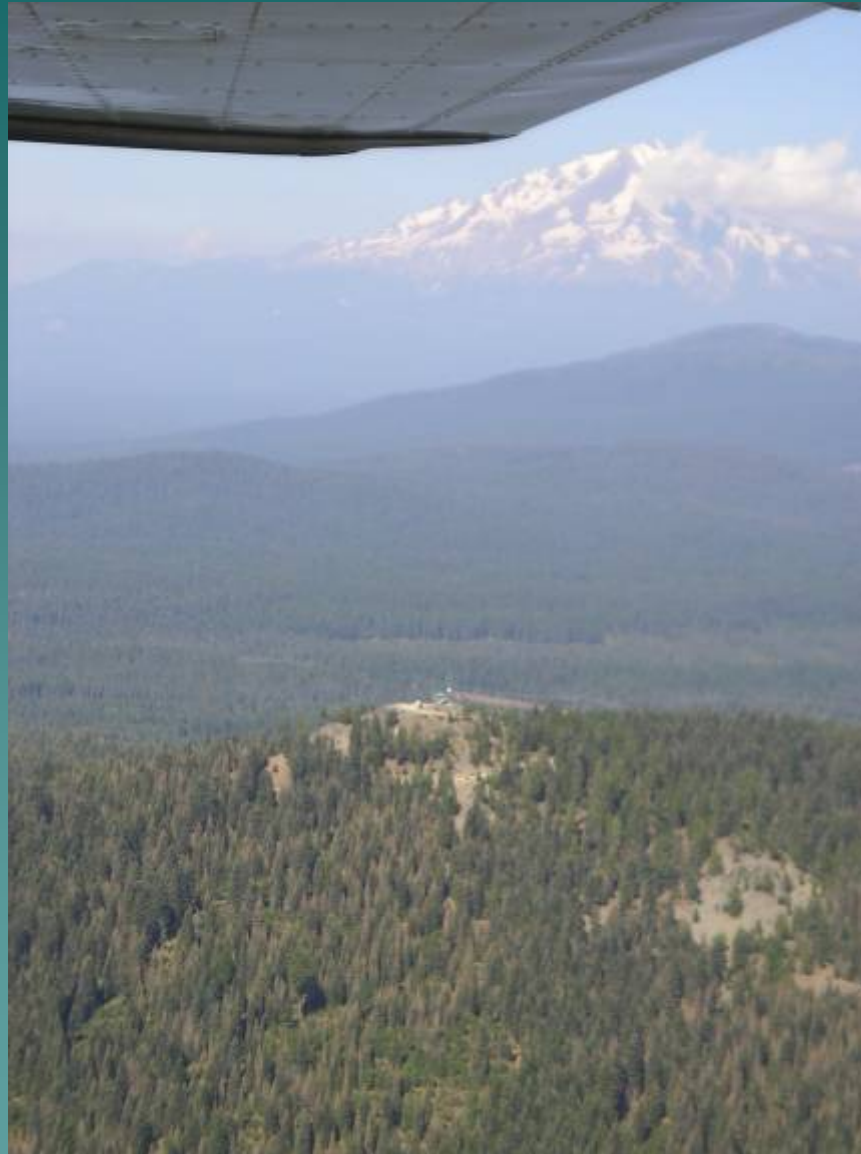
White fir tops



White fir Understory



Bear Mtn. Lookout



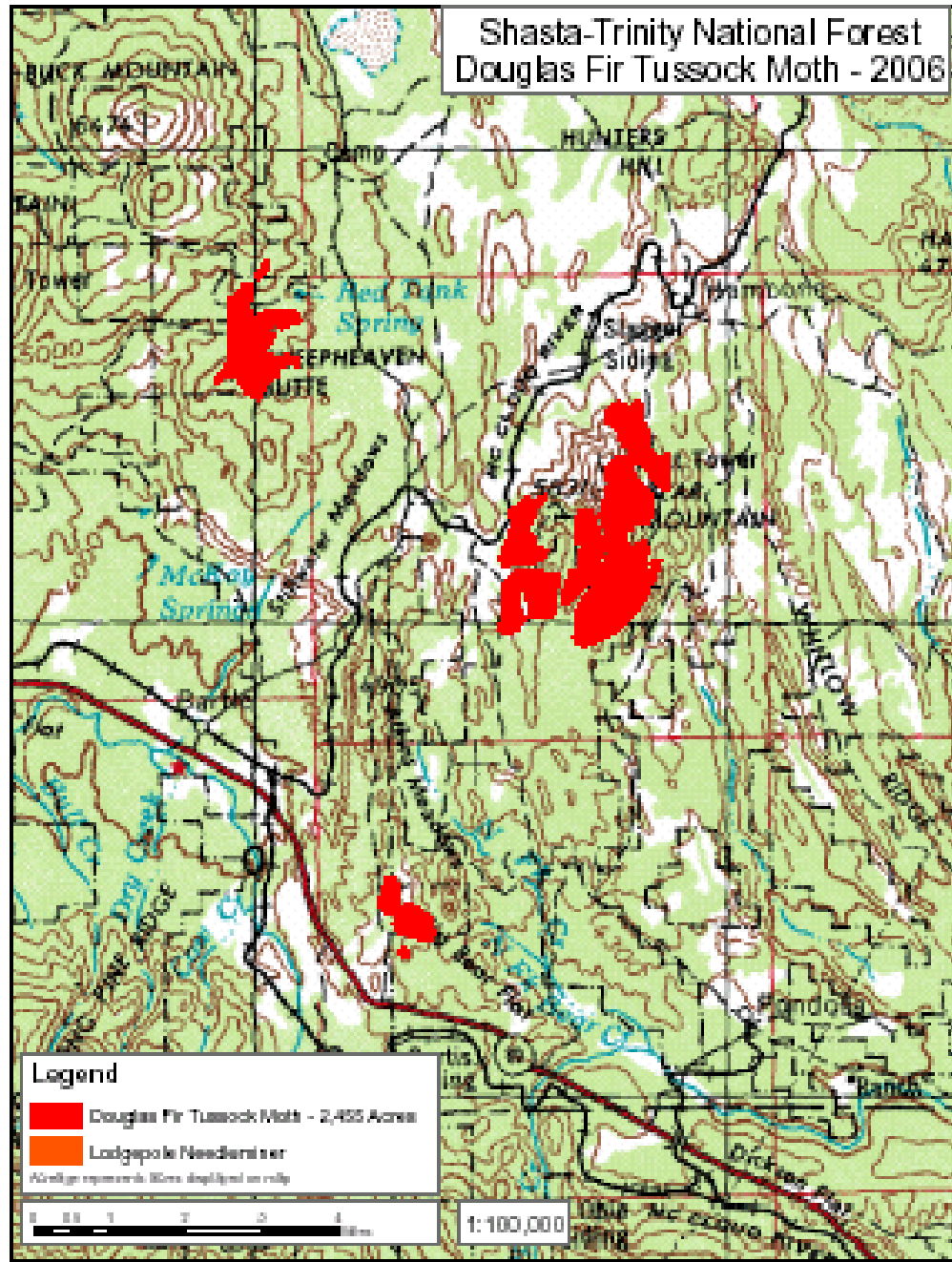
Aerial Survey



September



Shasta-Trinity National Forest Douglas Fir Tussock Moth - 2006



What's Next?

